



HYDRA SA20



**SMONTAGOMME
SUPERAUTOMATICO**



**SUPER-AUTOMATIC
TYRE CHANGER**

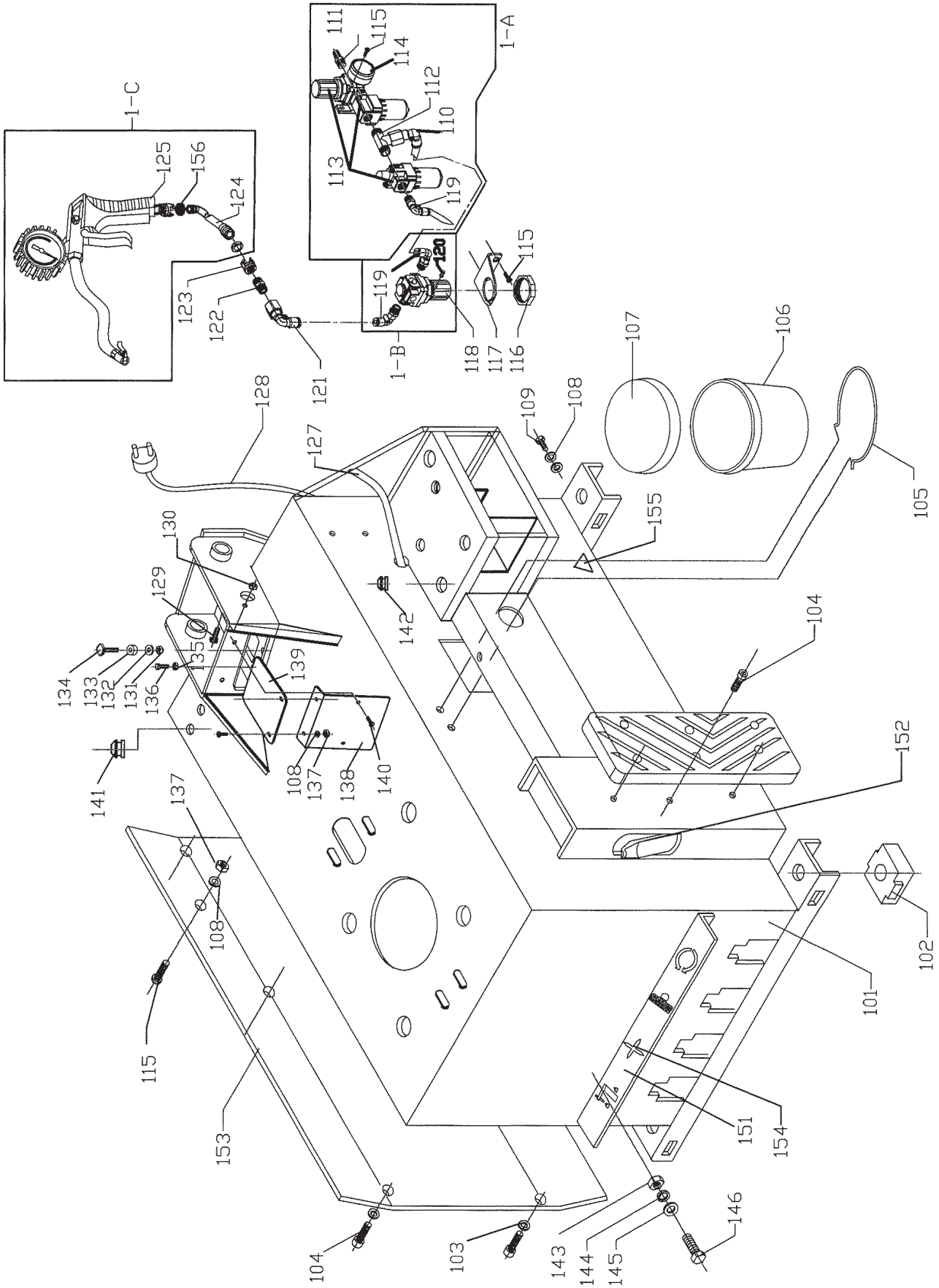
CASSONE

CHASSIS

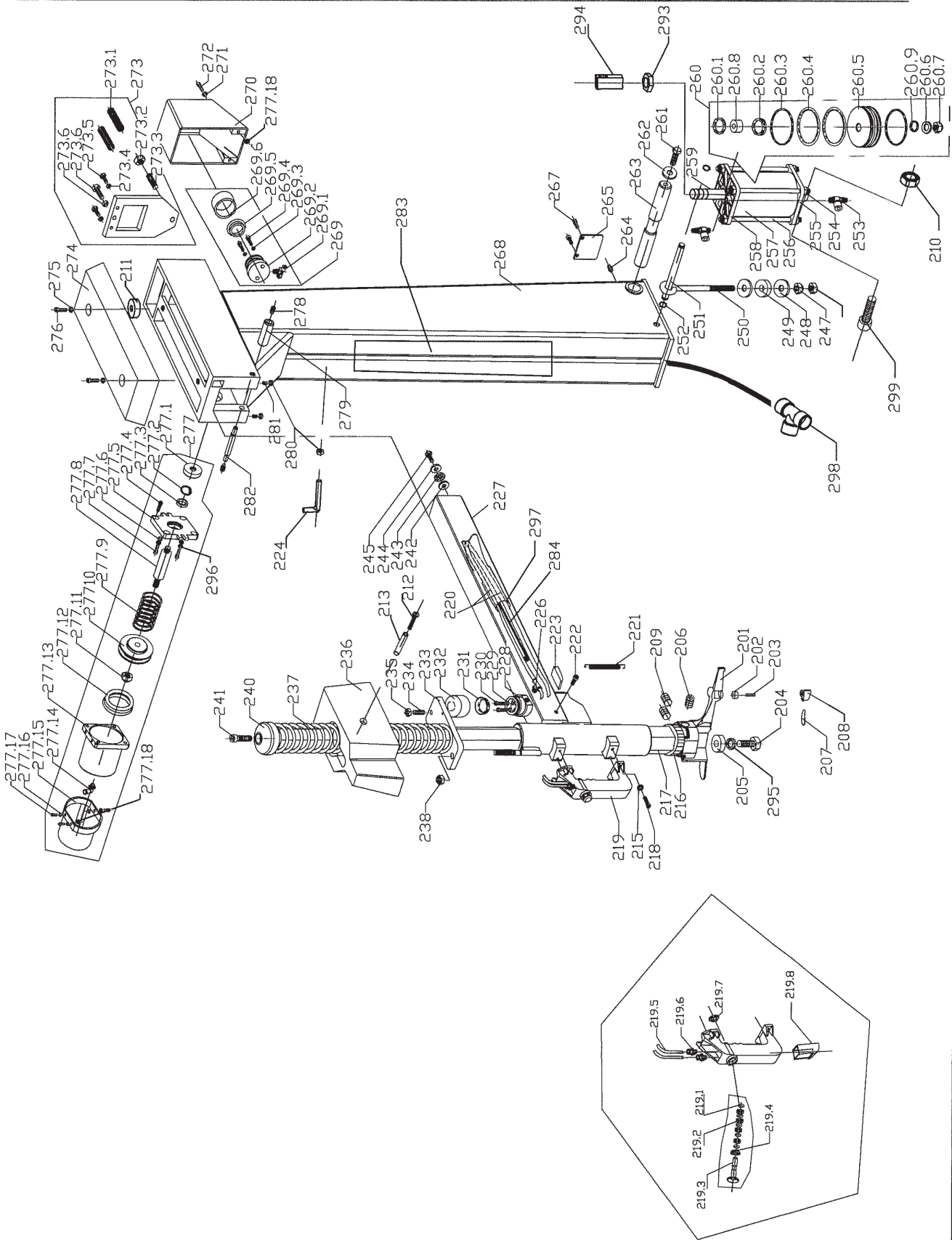
RAHMEN

CAISSON

BASTIDOR



COLONNA	
POST	SÄULE
COLONNE	COLUMNNA



Ref.	Code	Description	Specification	Q'ty	Note
201		Mounting head	5#	1	
202	GT890.03.12	Roller	13X13	1	
203	GT890.03.13	Pin	6X24	1	
204		Screw	M10X25 8.8 CLASS	1	
205	GT890.03.11	Pressing washer	∅34X∅11X8	1	
206		Pin	M12X12	2	
207		Plastic protection cover		1	
208		Plastic protection cover		1	
209		Screw	M12X16	2	
210		Locknut	M12	1	
211		Washer	∅26X7X12	2	
212		Screw	M6X40	2	
213		Spacer		2	
214					
215		Flat washer	4	4	
216		Shock absorber	S41	1	
217	GT893.03.02	Hexangular shaft	650mm	1	
218		Screw	M4X16	4	
219		Hand-control valve assy		1	
220		PU hose	∅6X1	3.8m	
221	GT885.03.08	Spring		2	
222		Screw	M6X10	2	
223	GT885.03.09	Positioning blade		1	
224	LC888.00.02	Gun holder		1	
225					
226		Union	G1/8"-∅6	1	
227	GT895.03.00	Push-pull arm		1	
228	GT885.03.11	Cylinder body		1	
229		O-ring	∅10X2	2	
230		Screw	M6X35	2	
231		Y-ring	65X8	1	
232	GT885.03.10	Cylinder housing		1	
233	GT895.03.05	Locking plate	S41	1	
234		Screw	M10X1X25	1	
235		Nut	M10X1	1	
236		Protection cover		1	
237	GT893.03.03	Spring	450X∅3X∅49	1	
238		Locknut	M10	1	
239					
240	GT895.03.06A	Knob	M10	1	
241		Screw	M10X30	1	
242	GT895.03.10	Washer		1	
243		Washer	25X11X7	1	
244	GT895.03.10	Washer		1	
245		Screw	M8X20	1	
246					
247		Nut	M10	2	
248		Washer	11	2	
249		Washer	30X15X10	1	
250	GT885.03.17	Connecting rod		1	
251	GT895.03.15A	Spindle	∅16	1	
252		Seeger ring	16#	2	
253		Valve	G1/4"-∅8	2	
254		Locknut	M8	8	
255	T-24X.00.05	Cylinder rear housing		1	
256	T-XD.00.03	Union		4	
257	T-XD.00.01	Cylinder body		1	
258	T-24X.00.01	Cylinder front housing		1	
259	T-XD.00.02	Shaft for cylinder		1	
260	T-XD.00.00	Cylinder assy		1	
260.1		O-ring	∅25X3.1	1	
260.2		Y-ring		1	
260.3		O-ring	∅80X3.1	2	
260.4		O-ring	∅80X5.7	2	
260.5	T-24X.00.04	Piston		1	
260.6		Flat washer	10	1	

Ref.	Code	Description	Specification	Q'ty	Note
260.7		Locknut	M10	1	
260.8	T-24X.00.07	Guide spacer		1	Nylon 66
260.9		O-ring	Ø14.5X2	1	
261		Screw	M10X25	2	8.8 class
262	GT885.03.14A	Washer		2	
263	GT895.03.14	Rotate spindle		1	
264		Oil container	M6	1	
265	GT895.03.13	Sealing plate		1	
267		Screw	M6X10	2	
268	GT893.02.00	Vertical arm		1	
269		Locking cylinder assy		1	
269.1		Union	G1/8"-Ø6	1	
269.2	GT885.03.11	Locking cylinder body		1	
269.3		O-ring	Ø10X2	2	
269.4		Screw	M6X35	2	
269.5		Y-ring	Ø5X8	1	
269.6	GT885.03.10	Lock cylinder housing		1	
270		T-cover		1	
271		Flat washer	6	2	
272		Screw	M6X16	2	
273		Locking plate		1	
273.1	GT885.03.13	Spring	2.0X14.5X13	2	
273.2		Nut	M10X1	1	
273.3		Screw	M10X1X25	1	
273.4		Nut	M6	2	
273.5		Screw	M6X30	2	8.8 class
273.6		Screw	M8X35	1	8.8 class
273.7		Nut	M8	1	
274		Plastic cover		1	
275		Flat washer	6	2	
276		Screw	M6X20	2	
277	GT895.04.00	Cylinder assy		1	
277.1	GT895.04.01	Washer		1	
277.2		Seeger ring	28#	1	
277.3		Ring	Ø27XØ20X6	1	
277.4		Screw	M6X16	2	
277.5	GT895.04.03	Cylinder housing		1	
277.6		Flat washer	6	2	
277.7		Screw	M6X25	2	
277.8	GT895.04.02	Shaft for cylinder		1	
277.9	GT895.04.04	Spring		1	
277.10	GT895.04.05	Piston		1	
277.11		Locknut	M10	1	
277.12		Y-ring	Ø65X8	1	
277.13	GT895.04.06	Cylinder body		1	
277.14		Union	G1/8-Ø8	1	
277.15		Protection cover		1	
277.16		Flat washer	5	3	
277.17		Screw	M5X16	3	
277.17		Washer		3	
278		Screw	M12X12	2	
279	GT895.03.17	Rotate spacer		1	
280		Nut	M8	3	
281		Screw	M8X20	2	
282	GT895.03.16	Support spindle		1	
283		Vertical arm label			
284	GT885.03.19	Steel wire		1	
285					
286					
287					
287.1					
287.2					
287.3					
287.4					
288					
288.1					
288.2					

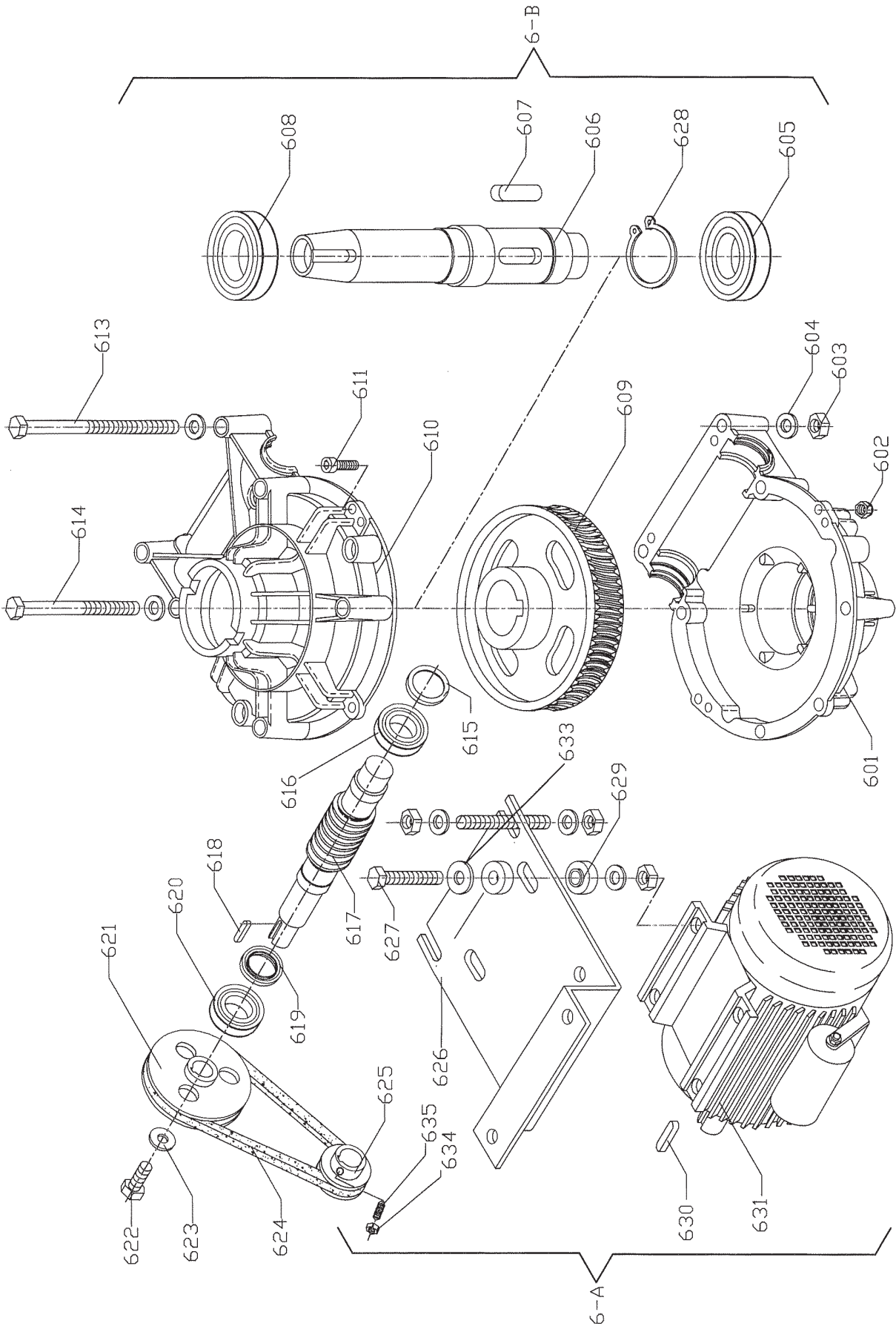
MOTORE/RIDUTTORE

MOTOR/GEAR BOX

ELEKTRO-MOTOR/UNTERSETZER

MOTEUR ÉLECTRIQUE/REDUCTEUR

MOTOR ELÉCTRICO/REDUCTOR



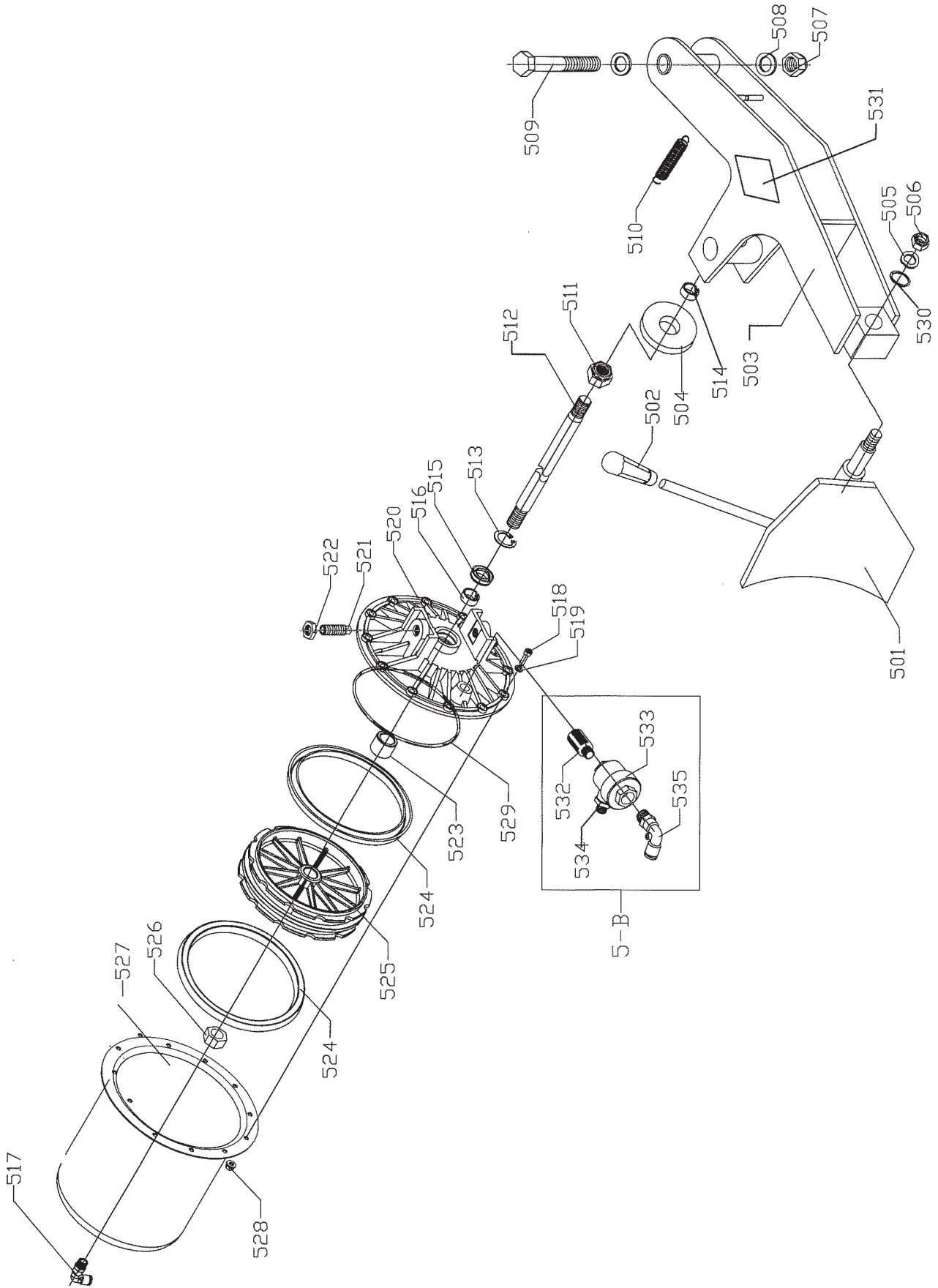
STALLONATORE

BEAD-BREAKER

REIFENABDRÜCKER

DÉTALONNEUR

DESTALONADOR

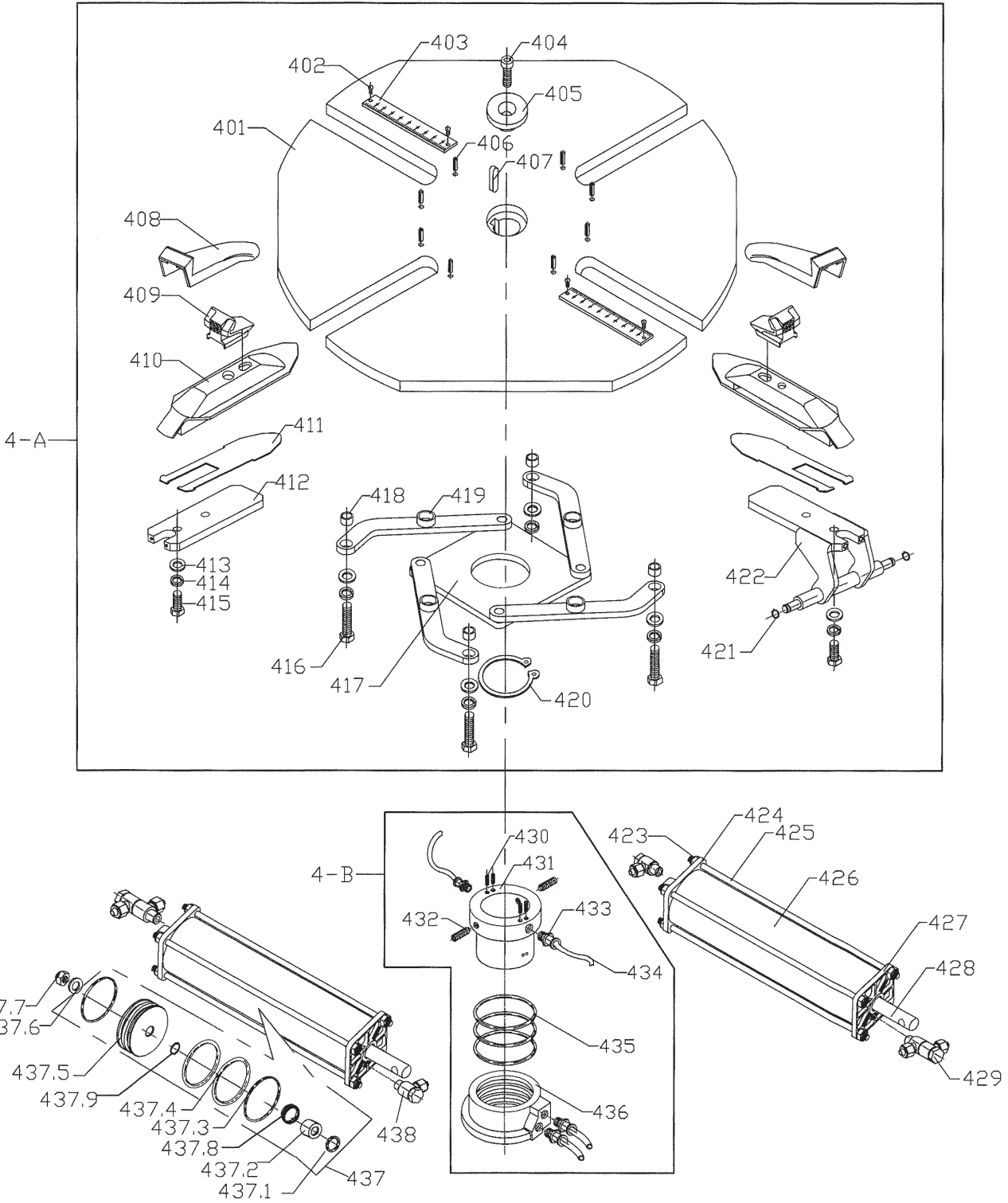


Ref.	Code	Description	Specification	Q'ty	Note
501	T-C. 02. 00	Bead breaker shoe		1	
502	GT890. 03. 14	Handle cover		1	
503	T-B. 03. 00A	Bead breaker		1	
504		Washer	∅80X20X10	1	
505		Washer	14	1	
506		Locknut	M14	1	
507		Locknut	M16	1	
508		Flat washer	I6	2	
509		Screw	M16X100	1	
510	T-B. 03. 02A	Spring	∅13(inside) X∅2.5X90	1	
511		Locknut	M18X1.5	1	
512	T-LS. 01. 01A	Cylinder shaft	385mm	1	
513		Seeger ring	30#	1	
514	T-B. 02. 08	Slide spacer		1	
515		Y-ring	∅30X∅20X7	1	
516		Wearable spacer	50 (length) X10X2.1	1	
517		Union	G1/8"-∅8	1	
518		Screw	M6X20	12	
519		Flat washer	6	12	
520	T-LS. 01. 04B ₁	Cylinder housing		1	
521		Pin	M14X42	2	
522		Nut	M14-S19	2	
523	T-LS. 01. 06A	Positioning spacer		1	
524		Bowl	∅186X12X9	2	
525	T-LS. 01. 02A	Piston		1	
526		Nut	M18X1.5	1	
527	T-LS. 01. 03B	Cylinder body		1	
528		Nut	M6	12	
529		O-ring	∅185X5.7	1	
530		Washer	37X13X2.5	1	
531		Bead breaker label		1	
532		Silencer	G1/4"	1	
533		Quick deflate valve		1	
534	T-K. 01. 08	Union	G1/4"-1/8"	1	
535		Union	G1/4"-∅8	1	
536					
537					
538					
539					
540					
541					
542					
543					
544					
545					
546					
547					
548					
549					
550					
551					
552					
553					
554					
555					
556					
557					
558					
559					
560					
561					
562					
563					
564					

TAVOLA AUTOCENTRANTE

TURNTABLE
TABLE AUTOCENTREUSE

AUFSPANNTISCH
TABLA AUTOCENTRADORA



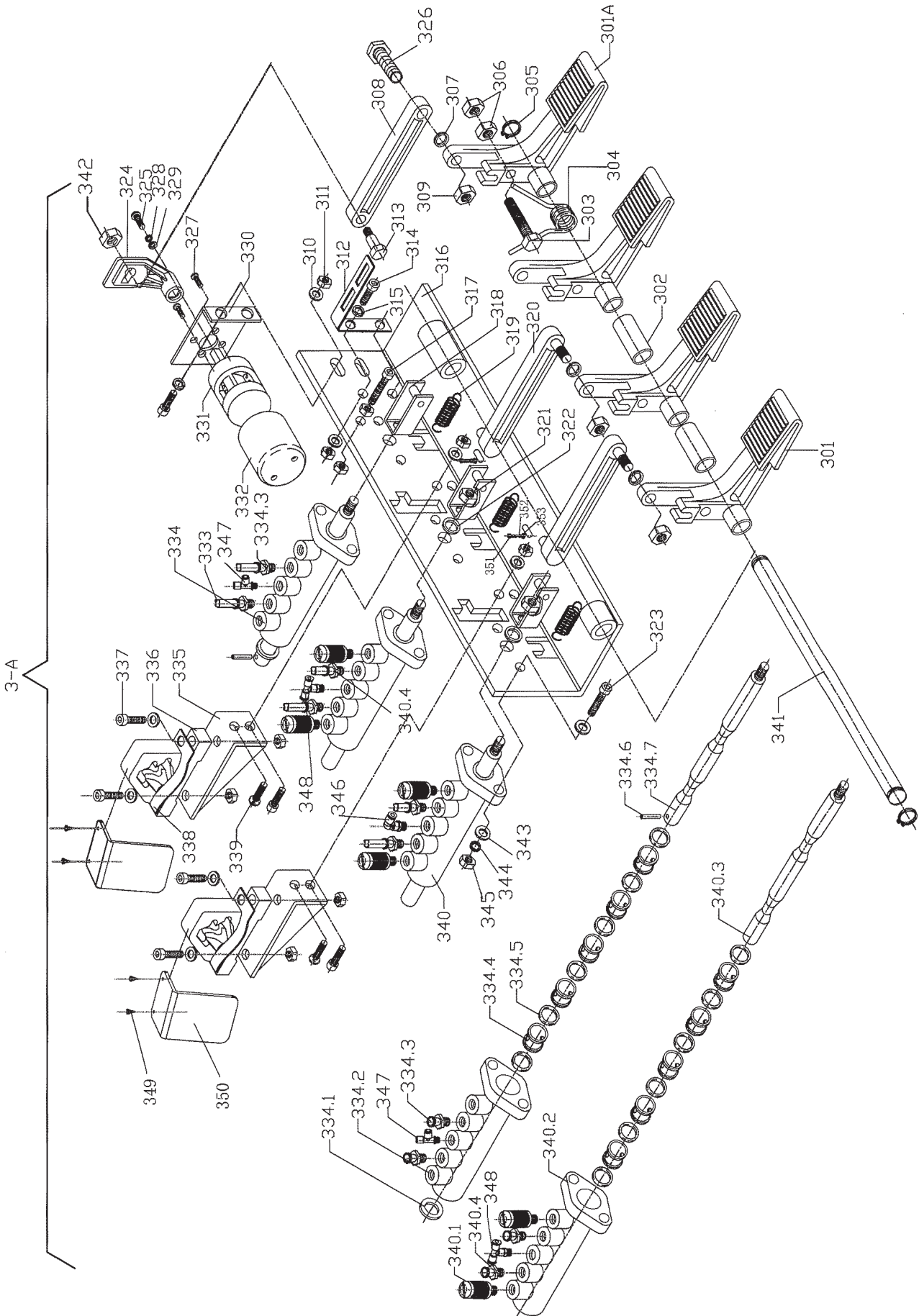
PEDALIERA

PEDALS-PLATE

PEDAL

PÉDALIER

PEDALERA



Ref.	Code	Description	Specification	Q'ty	Note
301	T-D. 02. 12B	Pedal		3	
301A	T-D. 02. 12C	Pedal		1	
302	T-D. 02. 01	Spacer pedal		2	
303		Screw	M8X55 (half)	1	
304	T-D. 02. 02	Spring		1	
305		Seeger ring	14#	2	
306		Nut	M8	2	
307	T-D. 02. 25	Spacer		3	
308	T-D. 02. 22A	Connecting rod		1	
309		Locknut	M8	3	
310		Flat washer	6	8	
311		Nut	M6	14	
312	T-D. 02. 21	Spring bracket		1	
313	T-D. 02. 26A	Spindle		1	
314		Screw	M6X16	6	
315		Elastic washer	6	11	
316	T-D. 04. 02. 00	Pedal bracket		1	
317		Screw	M6X30	1	
318	T-D. 02. 15	Bracket		3	
319	T-D. 02. 04	Spring		3	
320	T-D. 01. 09	Connecting rod		2	
321		Locknut	M8	3	
322	T-D. 02. 10	Spacer		2	
323		Screw	M5X25	6	
324	T-D. 02. 23A	Reverse lever	□ 8 (small)	1	
325		Screw	4X10	1	
326		Screw	M8X40	1	
327		Screw	M5X16	4	
328		Elastic washer	4	1	
329		Flat washer	4	1	
330	T-D. 02. 17	Switch bracket		1	
331		Reverse switch	40A	1	
332		Reverse switch guide		1	
333		PU hose	∅ 8X5	some	
334		Valve assemble		1	
334.1		Flat washer	10	1	
334.2	T-D. 02. 14	Valve body		1	
334.3		Union	G1/8"-∅8	4	
334.4	T-D. 01. 16	Spacer		15	
334.5		O-ring	∅ 17X4	18	
334.6		Pin	∅ 4X20	1	
334.7	T-D. 02. 13A	Valve pin		1	
335	T-D. 02. 05	Cam bracket		2	
336	T-D. 01. 10	Cam		2	
337		Screw	M6X25	4	
338		Fork plate spring		2	
339		Screw	M6X16	2	
340		Valve assemble		2	
340.1		Silencer	G1/8"	6	
340.2	T-D. 02. 14	Valve body		2	
340.3	T-D. 02. 07	Valve pin		2	
340.4		Union	G1/8"-∅8	2	
341	T-D. 04. 01	Spindle		1	
3-A	T-D. 04. 00	Pedal assembly		1	
342		Locknut	M6	1	
343		Flat washer	∅ 5	12	
344		Elastic washer	∅ 5	6	
345		Nut	M5	6	
346		Union	∅ 8 1/8	1	
347		Union	∅ 8 1/8	1	
348		Union	∅ 8 1/8	1	
349		Pin	M3X10	4	
350		Cam bracket		2	
351		Screw	M10X25	2	
352		Elastic washer	∅ 10	2	
353		Flat washer	∅ 10	2	



Dichiarazione di conformità - Declaration of Conformity
Konformitätserklärung - Déclaration de conformité
Declaración de conformidad - Overensstemmelseserklæring
Samsverserklæring - Överensstämmande intyg
EG-Conformiteitsverklaring



WERTHER INTERNATIONAL S.p.A.
Via F.Brunelleschi, 12 42040 CADE' (Reggio Emilia) Italy
Tel.++/+522/9431 (r.a.) Fax ++/+522/941997

con la presente dichiariamo che lo smontagomme modello
déclare par la presente que le monte-demonte pneus modèle
hereby we declare that the tyre changer model
hiermit erklären wir, daß die Reinfenmontirgerät
por la presente declara, que l'elevador modelo

HYDRA SA20

I

è stato costruito in conformità alle normative 73/23 CEE - 89/336 CEE e 98/37/CE

F

a été construite en conformité avec les normes 73/23 CEE - 89/336 CEE et 98/37/CE

GB

was manufactured in conformity with the normes 73/23 CEE - 89/336 CEE and 98/37/CE

D

in Übereinstimmung mit den Richtlinien 73/23 CEE - 89/336 CEE und 98/37/CE

E

ha sido fabricado según las disposiciones 73/23 CEE - 89/336 CEE y 98/37/CE

N

ble produsert i samsvar med direktivene 73/23/ EEC,89/336 EEC 98/37/ EEC).